



Soriani s.r.l.



Bulletin No: 2019_AR04

Release Date: June 12 2019

Effective Date: June 12, 2019

Supersedes: 2019_AR03

Completion Date: Immediately

Page: 1 of 11

SAFETY ALERT

Ride Manufacturer: Soriani Srl / Antonio Zamperla s.p.a	Affected Production Dates: all
Ride Name: Air Race 8.2 Trailer models	Affected Serial Nos.: GAR16R14165IQ; G53817249
Model Number: 8.2 Trailer Models	
<p>Abstract Of Issue: Safety Alert 2019_AR04 supersedes Safety Alert 2019_AR03.</p>	
<p>Reason For Release: Issuing additional preventive maintenance requirements for the stainless steel wing supports, p/n 9382013005.</p>	
<p>Action To Be Taken: Introduce immediately the following preventive maintenance requirements: 1. Daily Visual Test* (VT) and quarterly Liquid Penetrant test (PT) of the stainless steel wing supports, p/n 9382013005. 2. Replace the stainless steel wing supports, p/n 9382013005 (this is the part number of the parts originally supplied with the ride), after 5 years**. If the stainless steel wing support passes the NDT requirements listed in step 1, they are permitted to be used for the remainder of the 2019 season. All parts that are 5 years or older starting January 1, 2020 must be replaced regardless of any NDT results. For any future spare part orders, part number 9538013015A replaces p/n 9382013005. Part number 9382013005 is out of production as of the issue of this Safety Alert.</p>	
<p>Detail Of Issue: See attached pages illustrating required periodic inspections for p/n 9382013005 and 9538013015.</p>	
<p>Future Action To Be Taken: Update the preventive maintenance program to include all items in the 'Action To Be Taken' and 'Detail of Issue' sections above. For any information, please contact Antonio Zamperla Spa Phone: +39 0444 998400 Fax: +39 0444 573720 email: zamperla@zamperla.it</p>	

Abbreviations:

Nos. = numbers

P/n = part number

VT = Visual test

PT = Liquid penetrant Test

NDT = non destructive testing

*VT = visual inspection (by certified inspector or maintenance mechanic).

PT = dye penetrant testing procedure per EN 571-1 / EN 1289-2X or ASTM E165.

**Age of part starts from date of first public operation.

AIR RACE 8.2 - Trailer model Maintenance update bulletin



ANTONIO ZAMPERLA S. p. A
Via Monte Grappa 15/17, 36077 Altavilla Vicentina,
Italy ph +39 0444 998 400/ fax +39 0444 573 720
mail: zamperla@zamperla.it
www.zamperla.com



HEADQUARTERS

[ANTONIO ZAMPERLA S.P.A](#)

VIA M.TE GRAPPA 15/17

36077 ALTAVILLA VICENTINA, ITALY

PHONE: +39 0444 998400

E-MAIL: ZAMPERLA@ZAMPERLA.IT

WORLD OFFICES AND PLANTS

ZAMPERLA INC.

49 FANNY ROAD, BOONTON, NJ 07005

PHONE: +1 973 334 8133

FAX: +10 973 334 6880

EMAIL: ZAMPERLA@ZAMPERLAUSA.COM

WEB: WWW.ZAMPERLA.COM

ZAMPERLA MIDDLE EAST

AL-MOOSA TOWER 2 SHK. ZAYED ROAD 317 P.O. DUBAIW

PHONE: +971 4 3315507

FAX: +971 4 3315508

EMAIL: ZAMPERLAME@ZAMPERLA.COM

WEB: WWW.ZAMPERLA.AE

ZAMPERLA RUSSIA

115114 KOZHEVNICHESKAYA ST. 7/2 MOSCOW, RUSSIA

PHONE: +7 (8) 495-5444262

FAX: +7 (8) 495-5444263

EMAIL: ZAMPERLA@ZAMPERLA.RU

WEB: WWW.ZAMPERLA.RU

ZAMPERLA AMUSEMENT RIDES

#10 HUOJUROAD, SUZHOU NEW DISTRICT,

JIANGSUP.R.CHINA 215000

PHONE: +86 512 68786080

EMAIL: ZAMPERLA@ZAMPERLA.CN

WEB: WWW.ZAMPERLA.CN

ZAMPERLA ASIA PACIFIC

C-1 BLDG. GRANVILLE IND'I COMPLEX BANCAL,

CARMONA, CAVITE 4116 PHILIPPINES

PHONE: +63 46 4302025

FAX: +63 46 4303352

EMAIL: ZAMPERLA@ZAMPERLA.PH

WEB: WWW.ZAMPERLA.PH

1. INTRODUZIONE.....	7
2. AGGIORNAMENTO DELLA MANUTENZIONE.....	8
2.1 SUPPORTO TEMATIZZAZIONE 9538013005A	9
2.1.1 MANUTENZIONE	10
2.1.2 SOSTITUZIONE.....	10
2.2 SUPPORTO TEMATIZZAZIONE 9538013015A	11
2.2.1 MANUTENZIONE	12

1. INTRODUCTION.....	4
2. MAINTENANCE UPGRADE	5
2.1 DECORATION SUPPORT 9538013005A.....	6
2.1.1 MAINTENANCE	7
2.1.2 SUBSTITUTION.....	7
2.2 DECORATION SUPPORT 9538013015A.....	8
2.2.1 MAINTENANCE	9

1. INTRODUZIONE



Attenzione!

QUESTO DOCUMENTO È UN AGGIORNAMENTO DELLA
MANUTENZIONE DELL'ATTRAZIONE AIR RACE 8.2.
DEVE ESSERE ALLEGATO AL MANUALE DI USO E
MANUTENZIONE DELLA MACCHINA.

1. INTRODUCTION



Warning!

THIS DOCUMENT IS AN UPDATE OF THE MAINTENANCE
OF THE RIDE AIR RACE 8.2.
IT MUST BE ATTACHED TO THE RIDE USE AND
MAINTENANCE MANUAL.

2. AGGIORNAMENTO MANUTENZIONE

Il supporto tematizzazione (**Fig. 1 - Rif. 1**) deve essere controllato e/o sostituito nei modi e tempi descritti di seguito.

DELLA

2. MAINTENANCE UPGRADE

The decoration support (**Fig. 1 - Ref. 1**) must be checked and/or replaced according to the methods and timing described below.

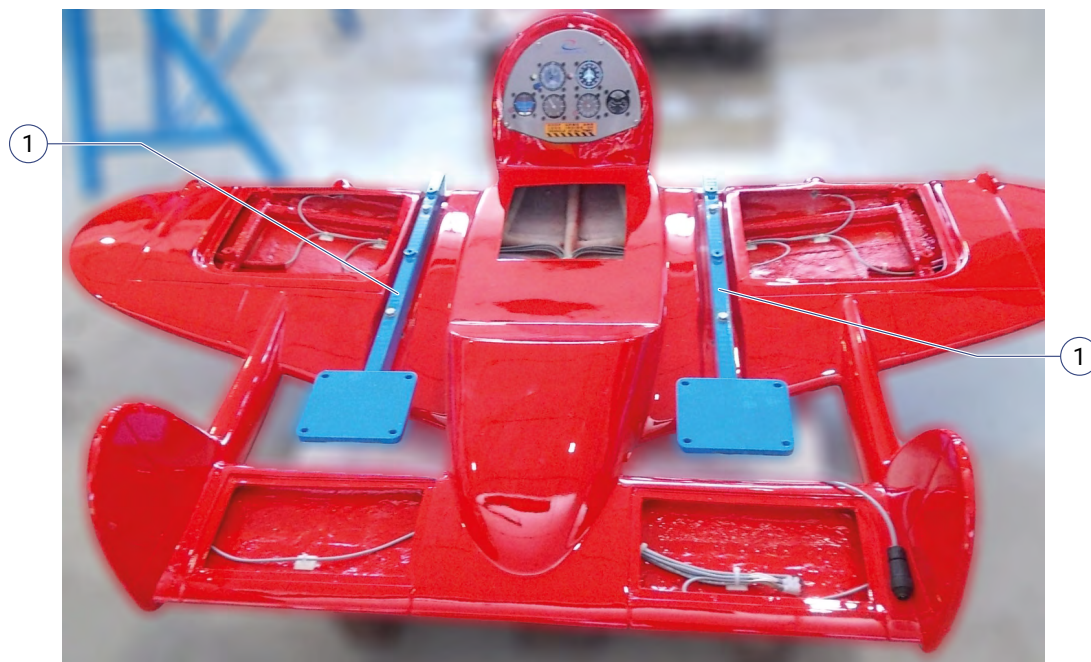


FIG. 01

La manutenzione varia in base al codice del componente:

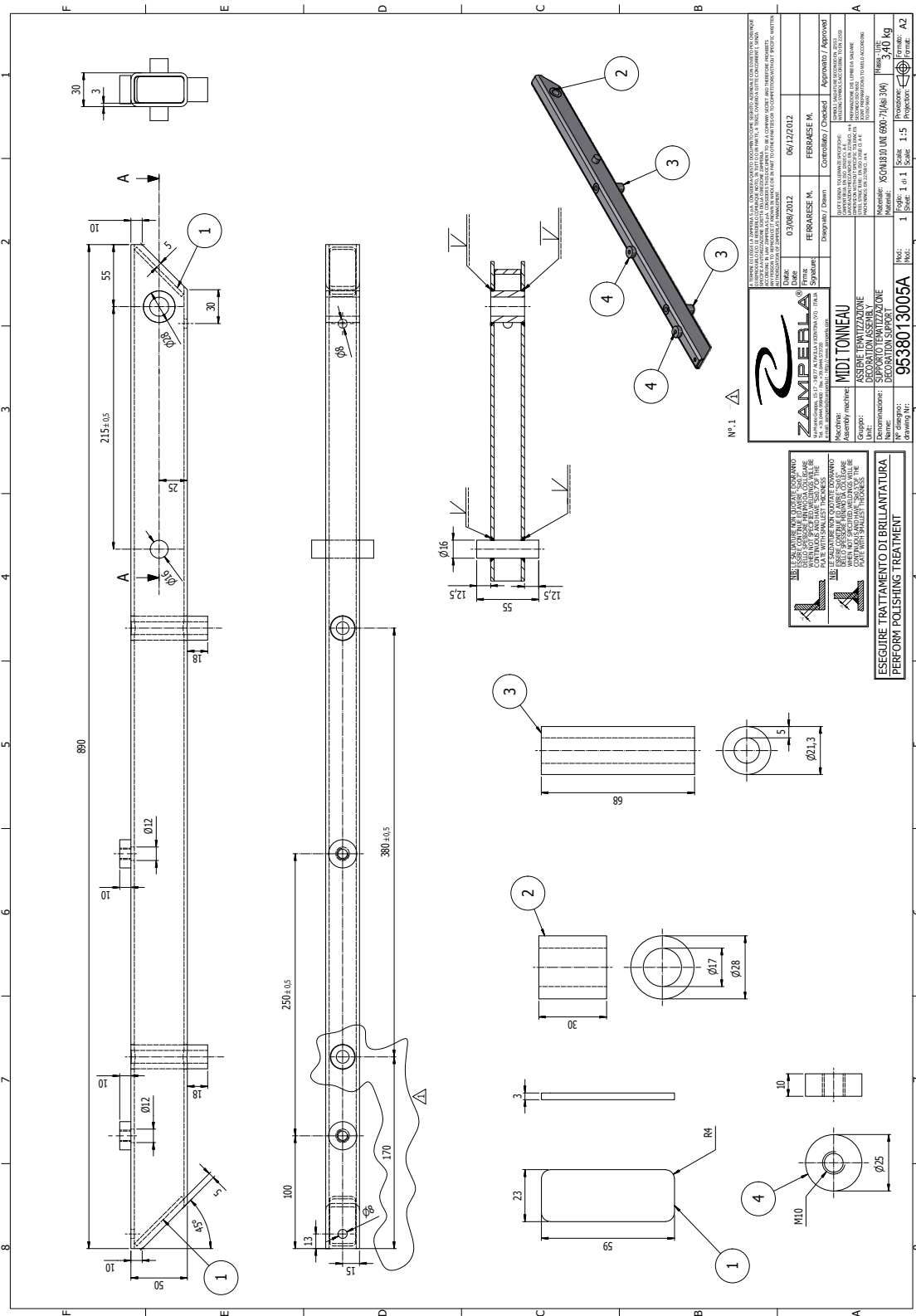
- per il codice **9538013005A** fare riferimento al **par. 2.1**;
- per il codice **9538013015A** fare riferimento al **par. 2.2**.

The maintenance depends by the code of the component:

- for code **9538013005A** refer to the **par. 2.1**;
- for code **9538013015A** refer to the **par. 2.2**.

2.1 SUPPORTO TEMATIZZAZIONE 9538013005A

2.1 DECORATION SUPPORT 9538013005A



2.1.1 MANUTENZIONE

Eseguire i controlli elencati di seguito con la cadenza indicata nei punti evidenziati in figura (**Fig. 2 - Rif. 1**):

- 1) **Quotidianamente** eseguire il test VT;
- 2) **Ogni tre mesi** eseguire il test PT.

LEGENDA	
VT	Ispezione visiva (<i>eseguita da un ispettore certificato o dal manutentore meccanico</i>)
PT	Ispezione con liquidi penetranti (<i>EN 571-1, UNI EN ISO 23277:2010 lev. 2X o ASTM E165</i>)

2.1.2 SOSTITUZIONE

Il supporto tematizzazione originale (**v. par. 2.1**) deve essere sostituito dopo cinque anni.



Attenzione!

SE LE ISPEZIONI EVIDENZIANO CRICCHE O DETERIORAMENTI DELLA STRUTTURA, È OBBLIGATORIO SOSTITUIRE IL COMPONENTE.

2.1.1 MAINTENANCE

Perform the following checks with the frequency indicated in the highlighted points in the figure (**Fig. 2 - Ref. 1**):

- 1) **Daily** perform a VT test;
- 2) **Quarterly** perform a PT test.

LEGENDA	
VT	Visual inspection (<i>by certified inspector or maintenance mechanic</i>)
PT	Dye penetrant testing (<i>EN 571-1, UNI EN ISO 23277:2010 lev. 2X or ASTM E165</i>)

2.1.2 SUBSTITUTION

The original decoration support (**see par. 2.1**) must be replaced after five years.



Warning!

IF INSPECTIONS REVEAL CRACKS OR DETERIORATION OF THE STRUCTURE, IT'S MANDATORY TO REPLACE THE COMPONENT.

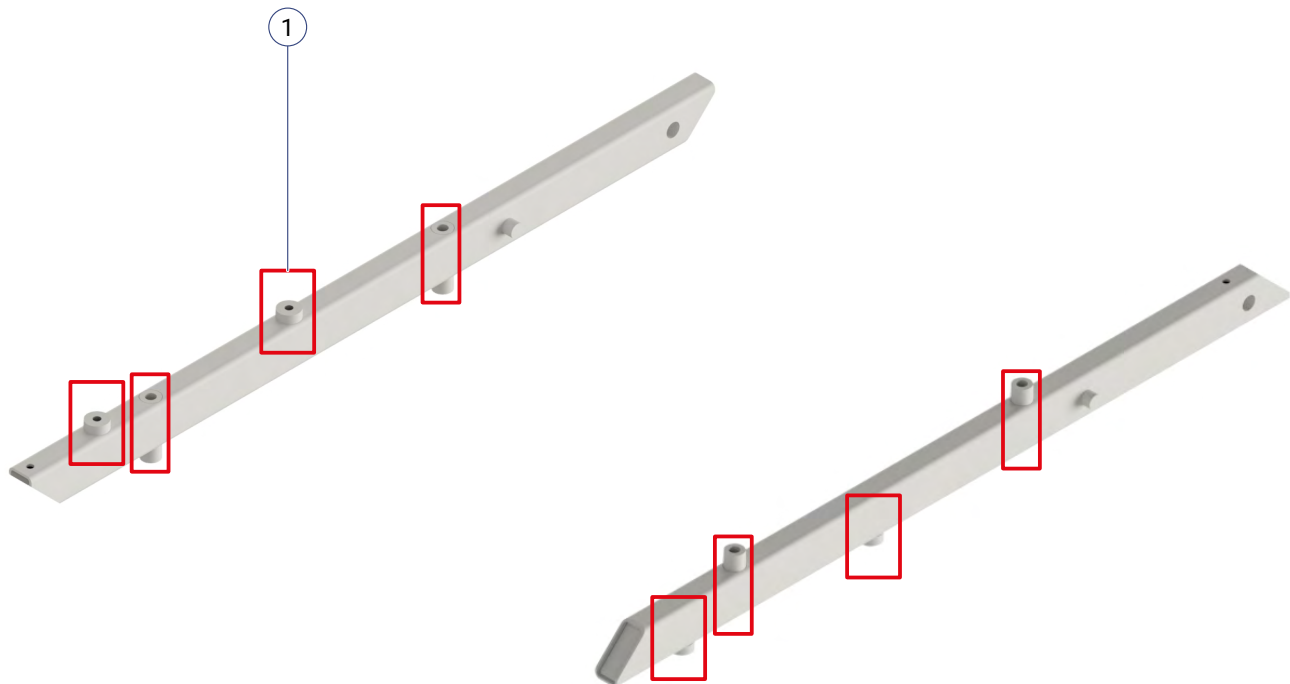


FIG. 02

2.2.1 MANUTENZIONE

Eeguire i controlli elencati di seguito con la cadenza indicata nei punti evidenziati in figura (**Fig. 3 - Rif. 1**):

- 3) **Mensilmente** eseguire il test VT;
- 4) **Ogni anno** eseguire il test MT.

LEGENDA	
VT	Ispezione visiva (<i>eseguita da un ispettore certificato o dal manutentore meccanico</i>)
MT	Ispezione magnetoscopica (<i>UNI EN ISO 17638:2010 - 23278:2010 lev. 2X o ASTM E709</i>)

2.2.1 MAINTENANCE

Perform the following checks with the frequency indicated in the highlighted points in the figure (**Fig. 3 - Ref. 1**):

- 3) **Monthly** perform a VT test;
- 4) **Yearly** perform a MT test.

LEGENDA	
VT	Visual inspection (<i>by certified inspector or maintenance mechanic</i>)
MT	Magnetic particle testing (<i>UNI EN ISO 17638:2010 - 23278:2010 lev. 2X or ASTM E709</i>)



Attenzione!

SE LE ISPEZIONI EVIDENZIANO CRICCHE O DETERIORAMENTI DELLA STRUTTURA, È OBBLIGATORIO SOSTITUIRE IL COMPONENTE.



Warning!

IF INSPECTIONS REVEAL CRACKS OR DETERIORATION OF THE STRUCTURE, IT'S MANDATORY TO REPLACE THE COMPONENT.

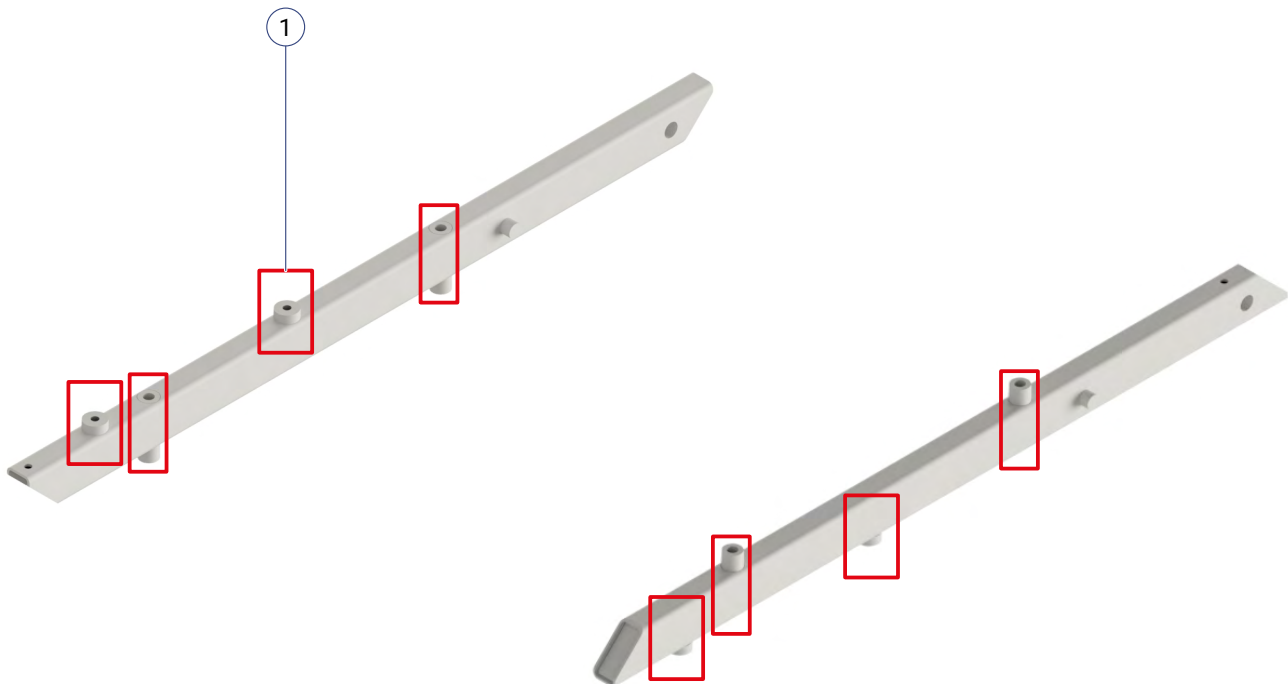


FIG. 03



Air race 8.2

Maintenance update dispatch

REV.00

June 12, 2019

All rights reserved

Any reproduction or unauthorized use

without the written permission of

A. Zamperla S.p.A.

is expressly prohibited.

dbz2019

